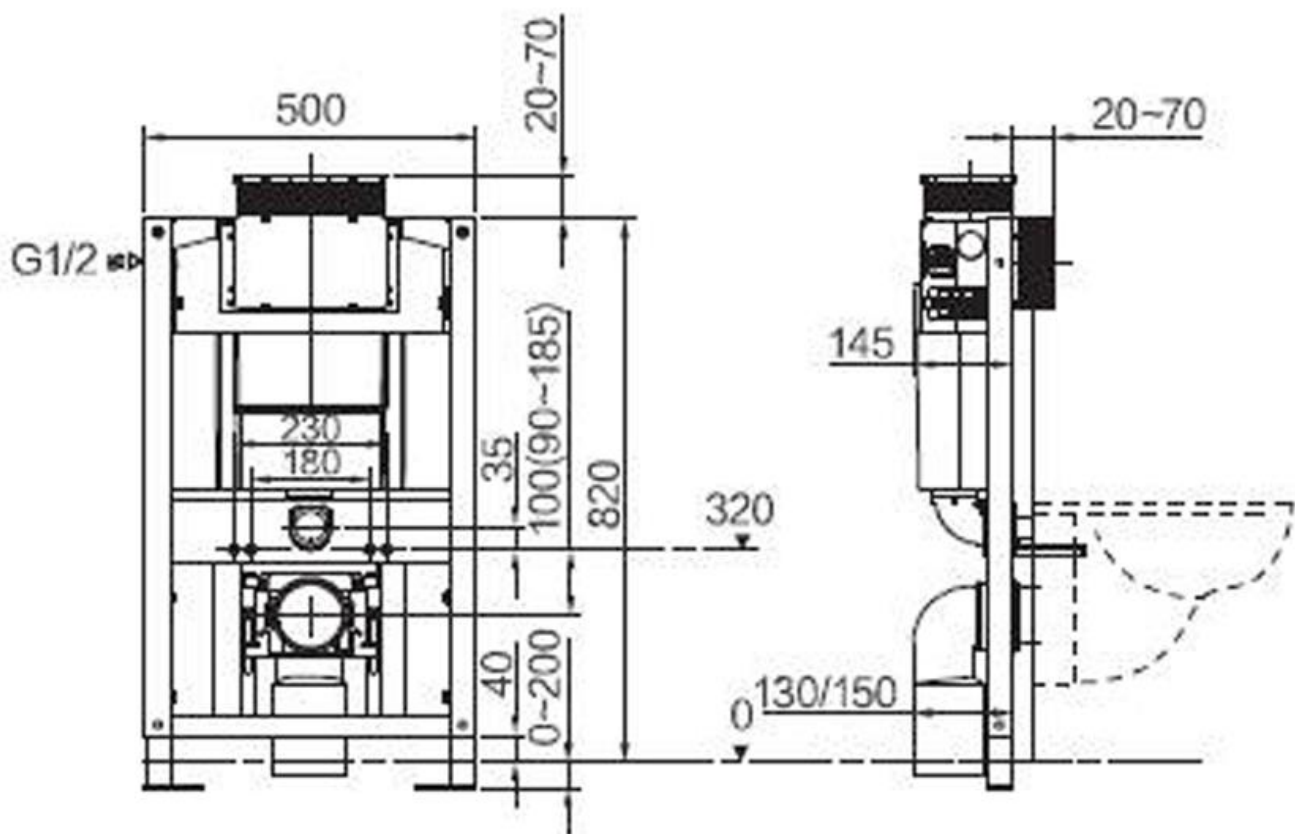




FEATURES

- Under counter cistern with frame, mechanical
- For wall-hung WC with fastening distance 180mm or 230mm
- For installation in front of solid or drywall, heavy load up to 400kg
- Galvanized leg supports adj. 0-120mm
- Water supply connection at the top PVC discharge bend - 90mm



meco international pty ltd.

meco.com.au

for all sales & product inquiries email sales@meco.com.au or call (02) 9618 6999

*all measurements are subject to accepted manufacturing tolerances. please check actual product dimensions prior to installation. meco international pty ltd reserves the right to change specifications at any time without giving prior notification.